

Connecting outer space to the edge of Earth's atmosphere • Tsunami warning system for the Indian Ocean • Saharan dust gives clues to weather patterns

GEOPHYSICAL RESEARCH LETTERS, VOL. 32, L09105, doi:10.1029/2005GL022854, 2005

The altitude extension of the mid-latitude trough and its correlation with plasmopause position

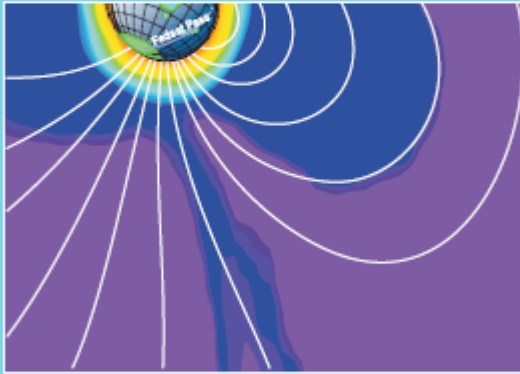
Endawoke Yizengaw and Mark B. Moldwin

Institute of Geophysics and Planetary Physics, University of California, Los Angeles, California, USA

Received 24 February 2005; revised 27 March 2005; accepted 29 March 2005; published 12 May 2005.

**Geophysical
Research
Letters**

28 OCTOBER 2006
Volume 33 Number 20
American Geophysical Union



First tomographic image of ionospheric outflows • Detailed analysis of the October 2005
Pakistan earthquake • China's surface temperatures to increase despite decrease in insolation



GEOPHYSICAL RESEARCH LETTERS, VOL. 33, L20102, doi:10.1029/2006GL027698, 2006

First tomographic image of ionospheric outflows

E. Yizengaw,¹ M. B. Moldwin,¹ P. L. Dyson,² B. J. Fraser,³ and S. Morley³

Received 28 July 2006; revised 8 September 2006; accepted 19 September 2006; published 19 October 2006.